

MONTHLY MEMBERSHIP PROGRESS REPORT

District 4 L2

Results as of: 5/31/2026

GMT:

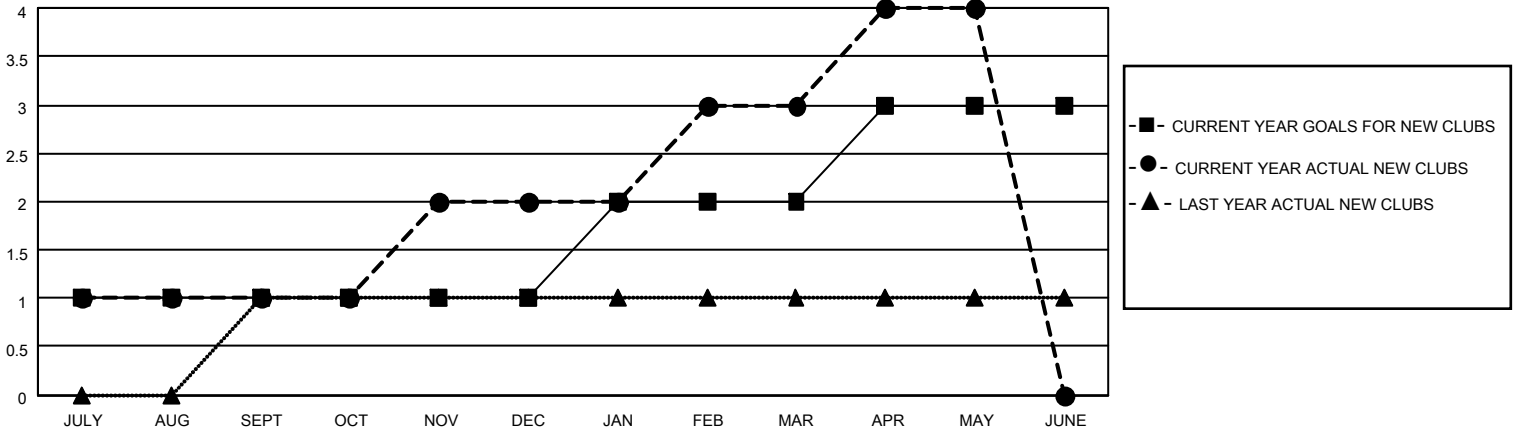
LOCATION CALIFORNIA

GMT CA

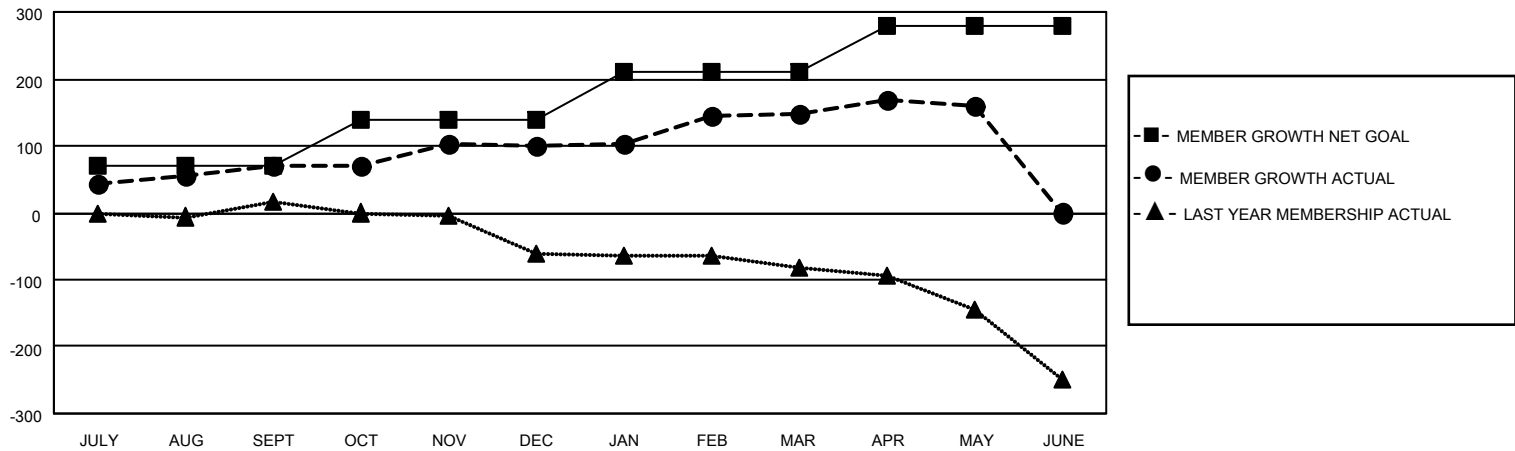
Clubs			
RESULTS FOR 2025-2026			
QUARTER	NEW CLUB GOAL	NEW CLUBS	DROPPED CLUBS
JULY/AUG/SEPT	1	1	0
OCT/NOV/DEC	0	1	1
JAN/FEB/MAR	1	1	1
APR/MAY/JUNE	1	1	0

Members			
RESULTS FOR 2025-2026			
QUARTER	MEMBER GROWTH NET GOAL	MEMBER GROWTH ACTUAL	DROPPED MEMBERS ACTUAL (including transfers)
JULY/AUG/SEPT	70	154	65
OCT/NOV/DEC	70	90	48
JAN/FEB/MAR	70	126	65
APR/MAY/JUNE	70	38	22

GOALS AND ACTUAL NEW CLUBS CUMULATIVE



GOALS AND ACTUAL MEMBERS CUMULATIVE



DROPPED CLUBS: 2	34 CLUBS OF 64 ADDED 1 OR MORE NEW MEMBERS	<u>GENDER DISTRIBUTION</u>	
<u>DROPPED MEMBERS</u>		MALE	809 (50.63%)
DECEASED	13	FEMALE	787 (49.25%)
CLUB CANCELLED	30	TOTAL FAMILY UNIT MEMBERS	
OTHER	157	170	
TOTAL	200	FAMILY MEMBERS PAYING HALF DUES	
		89	

[CLICK HERE FOR CUMULATIVE MEMBERSHIP DATA](#)